



Retro USA Inc. CA1QM Installation Instructions

Read All Instructions Carefully Before Starting Installation!

Pre-Installation

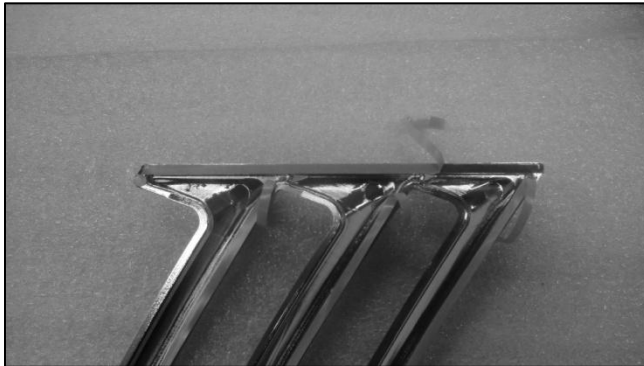
- 1.) Inspect product for damages that might have been caused by shipping before installing on vehicle. Retro USA Inc. will not accept damaged returns that have been installed on the vehicle.
- 2.) Test fit all parts on the vehicle prior to installation.
- 3.) Do not remove any red tape linings before installation. These will be removed during the installation process.
- 4.) **Important:** Prepare vehicle for installation by cleaning all adhesion surfaces. Vehicle surface must be clean and dry for proper adhesion. Use isopropyl alcohol and a cloth to remove existing wax and dirt residue.

Installation Tip

- To make the red lining tabs easily accessible during installation, fold the tabs back 45° in the direction that they will be pulled. It may be necessary to slightly lift the part during installation so that the linings pull off easily and do not tear.
- Install products in a cool shaded area. Make sure that vehicle surface is cool and clean before installing any products.
- Tape can take up to 72 hrs to fully cure and attain 100% adhesion. For maximum adhesion to vehicle do not pressure wash around products, use excessive force on products, or expose products to extreme heat or cold for up to 72 hrs after installation.
- For the latest version of instructions check our website at www.retrousa.net. Instructions can be found under the Technical Info tab. Version number is located in the upper right corner of the installation instructions.

Quarter Molding Installation

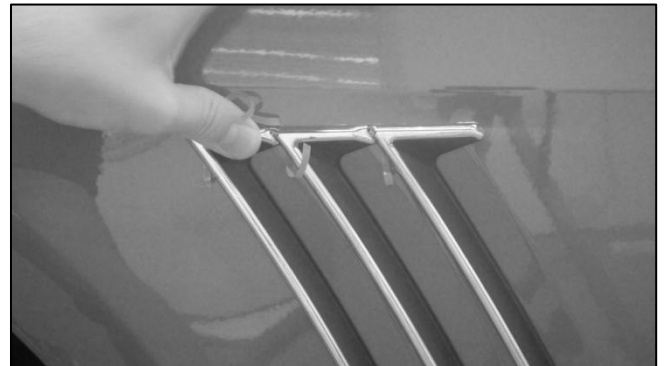
- 1.) Start with the passenger side of the vehicle
- 2.) Begin installation by pulling back the top tab slightly exposing about 1" of tape as shown below.



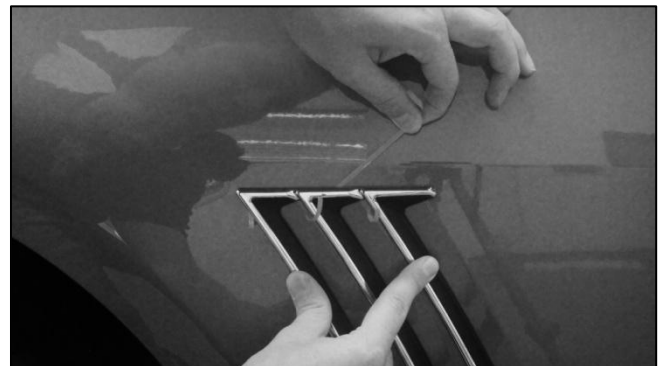
- 3.) Align quarter molding on the vehicle over the existing louvers impressions on the quarter panel as shown below. Quarter molding should be flush with vehicle quarter panel. Be sure all 5 tabs are exposed.



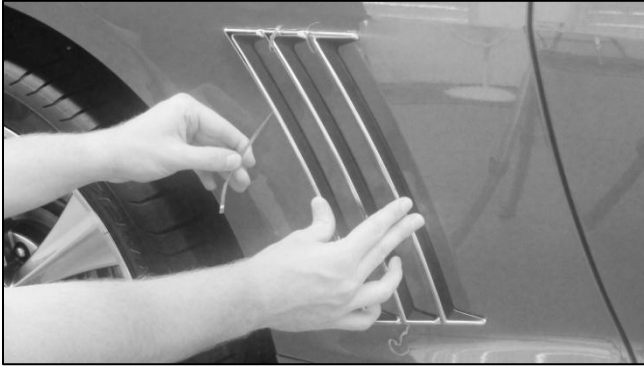
- 4.) Once quarter molding is properly aligned, press firmly on the quarter molding where the lining has been pulled back as shown below. This will hold the quarter molding in place while you pull the remaining tabs.



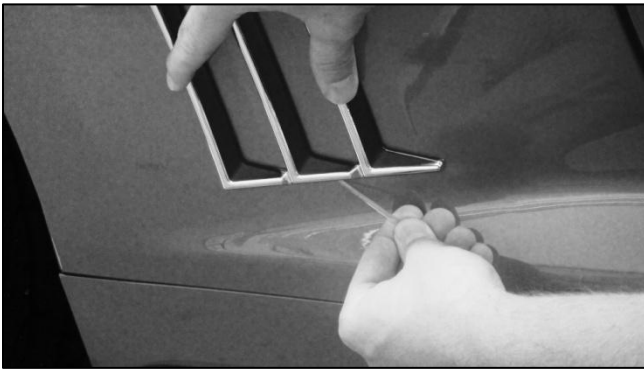
- 5.) Pull the entire top tab toward the front of the vehicle. Be sure that Quarter Molding remains properly aligned as you pull the tab. Apply firm pressure where lining has been removed. **Caution: Use extreme care when pulling liner so as not to tear the liner. See Installation Tips.**



- 6.) Pull the three middle tabs toward the bottom of the vehicle starting with the rear most tab as shown below. Be sure quarter molding remains properly aligned when pulling tabs. Apply firm pressure where lining has been removed.



- 7.) Pull the bottom tab toward the front of the vehicle as shown below. Apply firm pressure where the lining has been removed.



- 8.) Repeat steps 2-7 on the driver side of the vehicle.
- 9.) Congratulations! You have installed the Camaro Quarter Moldings.